

PRODUCT DATA SHEET



Series AS200 Elastomeric Spray



1. PRODUCT DESCRIPTION

SpecSeal® Elastomeric Spray Coating is a non-halogenated latex-based, highly elastomeric coating designed to provide passive smoke and fire protection in construction joints.

SpecSeal® Elastomeric Spray Coating is engineered to adhere to virtually all construction surfaces and may be applied using airless spray equipment or with a brush (for small applications or touch ups).

SpecSeal® Elastomeric Spray Coating dries to form a flexible shield against the propagation of fire. Its premium latex binder system is totally resistant to water and will not re-emulsify after drying. SpecSeal® Elastomeric Spray Coating contains no inorganic fibers, asbestos, solvents.

2. APPLICATIONS

SpecSeal® Elastomeric Spray Coating is designed primarily for the protection of construction joints and certain through-penetrations.

3. PHYSICAL PROPERTIES

See Table A.

4. PERFORMANCE

When applied to a wet film thickness of 1/8" (3.2mm) over appropriate backing materials, SpecSeal® Elastomeric Spray Coating has been successfully tested in one, two, three and four hour joints. Consult factory for individual system designs and application requirements.

LIMITATIONS: Use product as per manufacturer's instructions. Use only in applications per the manufacturer's tested and published designs or specific recommendations. End user must ultimately determine the suitability of the product and designs to his specific requirement and assumes responsibility for its use. PRODUCT CONTAINS WATER AND IS CONDUCTIVE UNTIL DRY. DO NOT APPLY IN THE PRESENCE OF EXPOSED OR ENERGIZED ELECTRICAL CONDUCTORS.



3L73

FILL, VOID OR CAVITY MATERIALS
CLASSIFIED BY UNDERWRITERS
LABORATORIES INC. ©
FOR USE IN JOINT SYSTEMS &
THROUGH-PENETRATION
FIRESTOP SYSTEMS.

SEE UL FIRE RESISTANCE DIRECTORY



FILL, VOID, OR CAVITY MATERIALS
CLASSIFIED BY UNDERWRITERS
LABORATORIES INC.
FOR USE IN JOINT SYSTEMS &
THROUGH-PENETRATION
FIRESTOP SYSTEMS.
SEE UL DIRECTORY OF PRODUCTS
CERTIFIED FOR CANADA AND
UL FIRE RESISTANCE DIRECTORY



FEATURES

- **Water-Based** for easy installation and cleanup.
- **Non-halogenated.**
- **Thixotropic** for high-build application.
- **Auto Bonding.**
- **Safe...**no solvents! No asbestos!
- **Flexible!**
- **Water Resistant!**
- **Low Abrasion** for longer pump life and less maintenance.
- **UL Classified.**
- Tested with **Direct-Applied Fireproofing.**

5. SPECIFICATIONS

The fire protective joint coating shall be a water-based, non-halogenated elastomeric coating and shall contain no solvents, inorganic fibers, nor asbestos. The coating shall dry to form a flexible, moisture resistant film and shall adhere to all common construction surfaces. The coating shall be thixotropic and shall be capable of being applied by brush or by airless spray. The approved coating shall be SpecSeal® Elastomeric Spray.

SPECIFIED DIVISIONS

DIV. 7	07840	Through-Penetration Firestopping
DIV. 13	13900	Special Construction Fire Suppression & Supervisory Systems
DIV. 15	15250	Mechanical Insulation – Fire Protection
DIV. 16	16050	Basic Electrical Materials & Methods

**Table A:
PHYSICAL PROPERTIES**

Color	Pale Blue and Red
Odor	Mild Latex
Specific Gravity	1.1
Solids	75%
Flame Spread	0*
Smoke Developed	25*
Movement	±33%**
Coverage	12.8 sq ft/gal @ 1/8" 0.31 sq m/l @ 3.2mm
Viscosity	110,000 cps
pH	7.5
Solvent Content	None
In-Service Temp.	≤120° F (49° C)
Drying Time	Tack Free 2 Hours Dry Through 24-48 Hours ^A
STC Rating	51
VOC Content	0.16 lbs/gal (20.0 g/L)
* Tested to ASTM E84 (UL723) @ 14% coverage.	
**500 Cycles per UL2079, AC30 (ICBO) and ASTM E1399	
^A Dependent on temperature and humidity.	

**6. INSTALLATION
INSTRUCTIONS**

GENERAL: Areas to be protected must be clean and free of oil, loose dirt, rust or scale. Recommended storage temperatures range between 40°F (4°C) and 95°F (35°C). Installation temperature must be between 35°F (2°C) and 100°F (38°C). Recommended application temperature range is 60°F (16°C) to 90°F (32°C). When applying product at the lower end of the temperature range, warming the material to 70°F (21°C) will enhance drying characteristics. Drying time will vary according to prevailing temperature and humidity. Allow to thoroughly dry before exposure to moisture.

Consult appropriate manufacturer’s drawing for system design requirements. Forming or packing materials may be required as an integral part of various system designs.

Coating may be applied by airless spray in a single pass up to 3/16" (4.8mm) wet coating depth. If applying by brush or spraying on vertical surfaces where coating appears to be prone to slumping, multiple coats or the application of a thin tack coat may be required. **DO NOT ATTEMPT TO THIN PRODUCT BY ADDING WATER.**

FIG. 1: METALLIC PIPE PENETRATIONS - CONCRETE/MASONRY FLOORS & WALLS

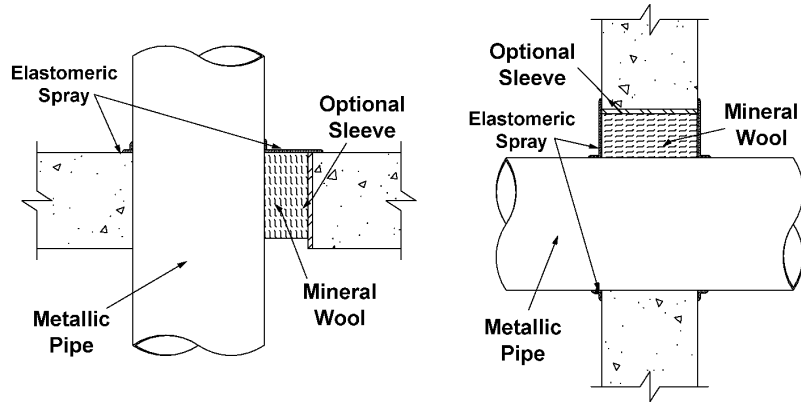
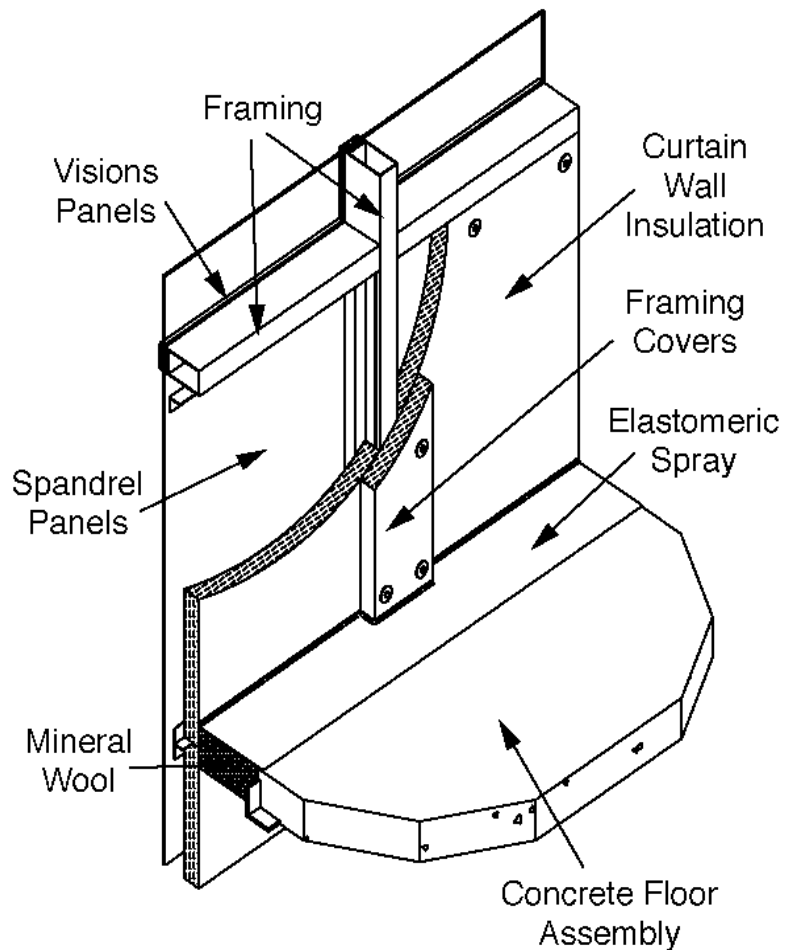


FIG. 2: SLAB-EDGE SAFING GAP APPLICATIONS



UL System No. CW-S-2003

Integrity Rating – 1-1/2 and 2 Hr
Insulation Rating – 0 and 1/4 Hr
Joint Width: Nom 8 in. wide.

Forming Material: Nom 4 pcf mineral wool to 4-1/2" depth.
Spray Depth: 1/8" wet depth (+1/2" lap onto adjoining substrates)

FIG. 3: FIREPROOFED STRUCTURAL PENETRATIONS - GYPSUM WALLBOARD WALLS

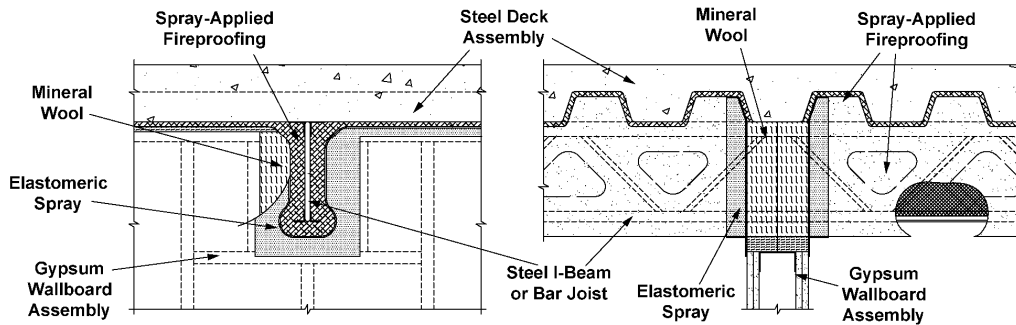
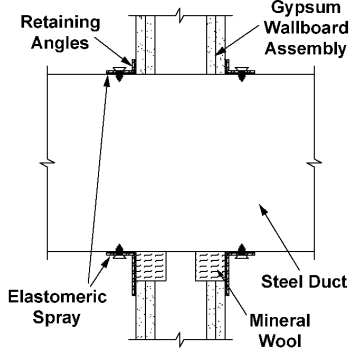


FIG. 4: STEEL HVAC DUCT PENETRATIONS - GYPSUM WALLBOARD WALLS



UL System No. W-L-7024

F Rating – 1 & 2 Hr • T Rating – 0 Hr
Steel Duct: 20" by 12"

Forming Material: Nom 4 pcf mineral wool to 2" depth.
Spray Depth: 1/8" wet depth (+2" overlap onto duct, 1" lap onto wall) on both sides.

FIG. 6: STEEL HVAC DUCT PENETRATIONS - CONCRETE/MASONRY WALLS

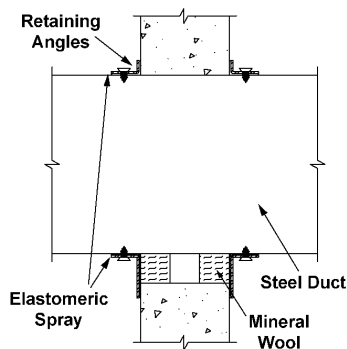
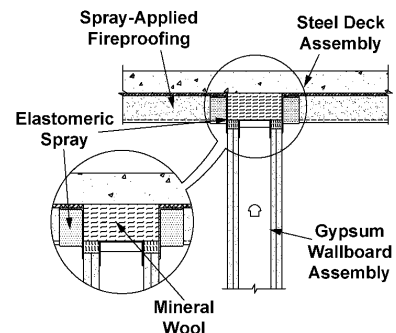


FIG. 5: HEAD-OF-WALL JOINTS BETWEEN WALLS AND FIREPROOFED STEEL DECKS



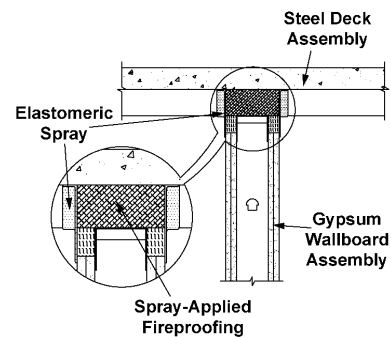
UL System No. HW-D-0088

Assembly Rating – 1 & 2 Hr

Movement Capabilities: ±18.75% Compress/Extend
Nominal Joint Width: 1"

Forming Material: Nom 6 pcf mineral wool to full depth.
Spray Depth: 1/8" wet depth (+2" lap onto fireproofing and 1/2" lap onto wall) on both sides.

FIG. 7: HEAD-OF-WALL JOINTS WITH FIREPROOFING INSTALLED INTO FLUTES AS FORMING



7. MAINTENANCE

Inspection: Installations should be inspected periodically for subsequent damage. Following safety precautions listed below (See 9. Precautionary Information) and pertinent installation guidelines, remove coating in damaged areas down to undamaged material. Reapply fresh coating material to original coating thickness.

8. TECHNICAL SERVICE

Specified Technologies Inc. provides toll free technical support to assist in product selection and appropriate installation design. UL Systems, Material Safety Data Sheets and other technical information is available at the Technical Library at www.stifirestop.com.

9. PRECAUTIONARY INFORMATION

Consult Material Safety Data Sheet for additional information on the safe handling and disposal of this material. Wash areas of skin contact with soap and water. Avoid contact with eyes. The use of an OSHA or NIOSH approved mask for dust and mist environment is recommended. Apply in areas with adequate ventilation.

CAUTION: COATING IS CONDUCTIVE UNTIL DRY. DO NOT APPLY TO OR IN THE PRESENCE OF ENERGIZED ELECTRICAL CONDUCTORS. INSTALL UNDER THE SUPERVISION OF PLANT OR FACILITY ELECTRICAL ENGINEER OR SAFETY MANAGER.

10. AVAILABILITY


SpecSeal® Elastomeric Spray Coating is available from authorized distributors. Consult factory for the names and locations of the nearest sales representatives or distributors. 

TABLE B: APPLICATION EQUIPMENT

NOTICE: Spray application of SpecSeal Elastomeric Spray requires airless spray equipment meeting the following specifications:
Working Pressure: Min. 3,000 PSI
Delivery: Min. 1.0 U.S. gpm (2.1 l/min.) recommended
Spray Tip Orifice: 0.023" to 0.026" recommended
Wetted Parts All seals and contact surfaces suitable for contact with latex emulsions.

The following airless spray equipment has demonstrated suitability for application of this product. STI makes no warranties concerning the suitability or use of this equipment and has no affiliation of any kind with its manufacturer.

A minimum 3/8" fluid line is required, a 1/2" line is preferred. Consult pump manufacturer for long hose runs or lifts to higher elevations. A reversible spray tip is recommended. A 6" fan pattern is suggested to minimize overspray.

The following equipment is manufactured by Titan Tool, Inc. Franklin Lakes, NJ:

Item	Item Name & Description
PowrTwin Model 3500 Sprayer	Electric or gas powered airless sprayer

TABLE C: ORDERING INFORMATION

SpecSeal® Elastomeric Spray Coating is available in 5 gal. pails, 55 gal. drums are available on a special order basis.

AS205 5 gal. Pail 1,155 cu. in. (19 liters)

Additional SpecSeal Products...

ES Series Sealant

Inexpensive water-based Elastomeric Sealant for construction joint applications. Design to provide up to ± 33% movement.

SSS Series Sealant

The industry's most versatile sealant provides the firestopping solutions for a wide range of combustible and noncombustible applications. Water-based intumescent sealant expands up to 8X!

SSP Firestop Putty

Available both in bar form and in pads, putty provides easy retrofit for through-penetrations and economical protection for electrical boxes.

Firestop Mortar

Lightweight, versatile and economical! The best choice for large or complex installations.

Pensil® Silicones

Sealants and foam for through-penetrations and construction joints. Unexcelled aging characteristics and flexibility.

Intumescent Wrap Strips

Three grades of intumescent wrap strips provide an unmatched combination of flexibility, economy, and expansion (up to 30X). Systems for plastic pipes including FR Polypropylene up to 8" trade size!

Molded Firestop Collars

Easy to install, economical protection for ABS and PVC pipes (both solid and foam core) as well as CPVC, PVDF, and FRPP. Collars available up to 6" trade size.



CITY OF NEW YORK MEA 310-99M

Important Notice: All statements, technical information, and recommendations contained herein are based upon testing believed to be reliable, but the accuracy and completeness thereof is not guaranteed.
WARRANTY: Specified Technologies Inc. manufactures its goods in a manner to be free of defects. Should any defect occur in its goods (within one year), Specified Technologies Inc., upon prompt notification, will at its option, exchange or repair the goods or refund the purchase price.
Limitations and Exclusions: THIS WARRANTY IS IN LIEU OF ALL OTHER REPRESENTATIONS EXPRESSED OR IMPLIED (INCLUDING THE IMPLIED WARRANTIES OF MERCHANTABILITY OR FITNESS FOR USE) AND UNDER NO CIRCUMSTANCES SHALL SPECIFIED TECHNOLOGIES INC. BE RESPONSIBLE FOR ANY INCIDENTAL OR CONSEQUENTIAL PROPERTY DAMAGE OR LOSSES. PRIOR TO USE, THE USER SHALL DETERMINE THE SUITABILITY OF THE PRODUCT FOR ITS INTENDED USE, AND THE USER ASSUMES ALL RISKS AND LIABILITY FOR SUBSEQUENT USE.
No statement or recommendation not contained herein shall have any force or effect unless in an agreement signed by officers of seller and manufacturer.

MADE IN THE USA – COPYRIGHT © 2004 SPECIFIED TECHNOLOGIES, INC.



200 Evans Way • Somerville, NJ 08876
Phone: (800) 992-1180 • Fax: (908) 526-9623
STI on the WEB: www.stifirestop.com